

## TECHNICAL DATA

■ Displacement	2.47 cc	■ Weight	200 g
■ Bore×Stroke	15.0×14.0 mm	■ Mount size	34.0×12.5 mm
■ Rotational speed	3,000~12,000 rpm	■ Muffler	MC154 (with choke nipple)

## ◇ SUITABLE PROPELLERS

	11CX DIESEL	U11CX DIESEL	SS15 DIESEL
C/L	9×4~5	9×5~6	10×4, 9×6
R/C	9×4~5	9×5~6	10×4~5

## ◇ FUEL

ENYA SS15D will operate satisfactorily on most kinds of model diesel fuel of high quality sold on the market. But take care of the following.

a) The best running positions of **compression adjusting screw** (C.A.S.) and needle valve very according to the kind of fuel.

b) Ethyl ether (one of the chief components) is very volatile. And old fuel (reserved for a long time) sometimes causes troubles of non-starting, unsmooth-running, poor power, etc.

The standard mixing ratio of components is as follows.

COMPONENT	MIXING RATIO
Kerosene	39~41%
Ethyl ether	34~36%
Castor oil	25%
Amyl-nitrate(amyl-nitrite)	0~2%

## ◇ BREAKING IN

It is recommended to break your ENYA SS15D in carefully with slightly rich mixture during 1/2 or 1 hour on a test stand to obtain maximum power and long life.

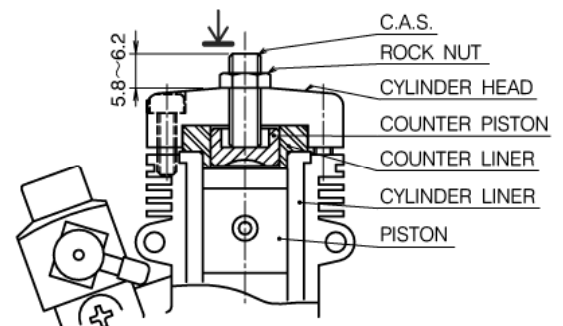
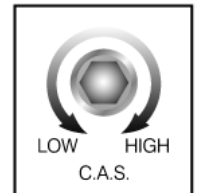
## ◇ CORRECT HANDLING OF THE C.A.S.

It is very important to confirm the correct positions of the C.A.S. and handle it properly to start and run a model diesel engine. The engine may be broken if it is handled improperly. The best position of the C.A.S. of ENYA SS15D for starting and running is usually between 5.8 ~ 6.2 mm from the top of the cylinder head. The C.A.S. of each ENYA SS15D is set in the best position for starting at the factory.

## ◇ STARTING ENYA SS15 DIESEL

ENYA SS15D will start very easily by proper handling.

1. Close the needle valve, and fill the fuel tank with fuel.
2. Prime the engine by injecting several drops of fuel both in the intake and exhaust port, and the needle valve 2 or 2 1/2 turns.
3. Crank the engine unti clockwise quickly by flipping the propeller with your finger. The engine should start by 10 ~ 20 good flicks when the fuel is of good quality, and the quantity of fuel injected and the compression ratio are proper.
  - in case the engine neither starts nor knocks in 20 ~ 30 flicks, screw up the C.A.S. 1/8 or 1/4 turns continuing, flipping the propeller.
  - In case the engine pre-ignition and knocks, slack off the C.A.S. 1/8 ~ 1/4 turns.
  - If the engine stops after a short running, open the needle valve more 1/4 ~ 1/2 turn, and continue to flip the propeller after priming.
  - As the overflowed fuel from the carburetor into crankcase makes starting the engine difficult, take care the fuel surface in the tank is not too high.
4. Once your engine starts, adjust the needle valve and the C.A.S. alternately and gradually to the best running position. **DO NOT RAISE THE COMPRESSION SO HIGHLY AS THE ENGINE SLOWS DOWN.** This is very harmful for the engine.
5. In case the C.A.S. of your ENYA SS15D has the tendency of loosening while it is running, use the locking nut enclosed in the box.

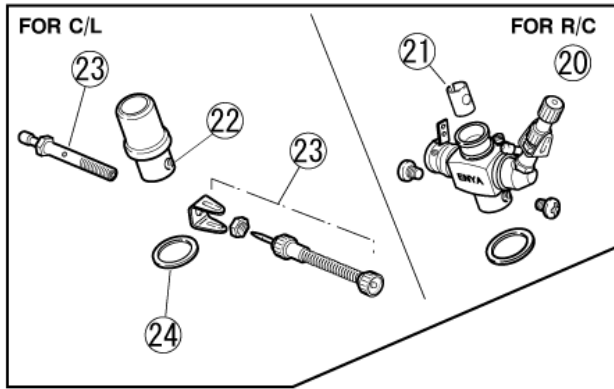


## ◇ OTHER NOTE

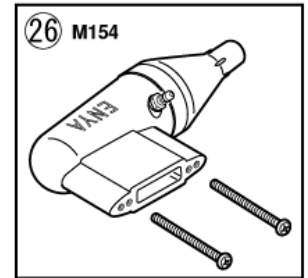
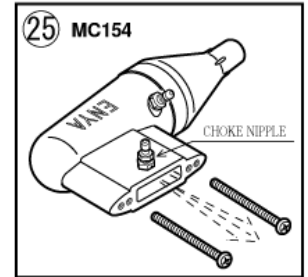
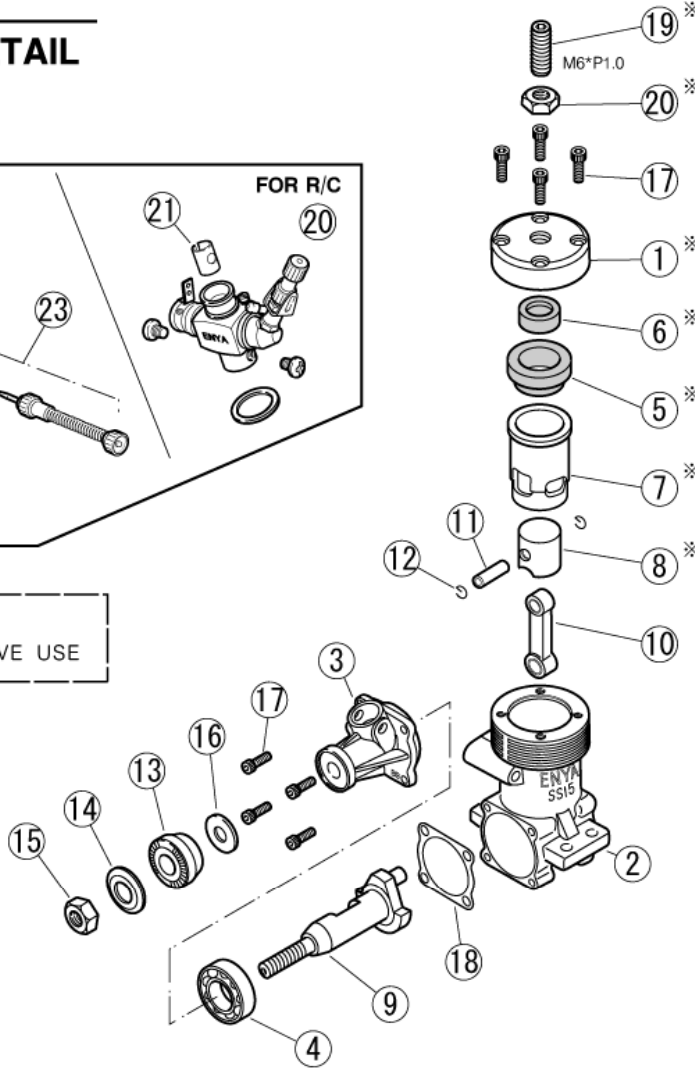
1. Do not disassemble your engine needlessly.
2. If you find some defective parts or workmanship in your new engine, return it to our factory. We will repair it free of charge.

# DRAWING DETAIL

# SS15 Diesel



【※MARK】  
SS15Diesel EXCLUSIVE USE



# PARTS LIST

No.	Name of part	Qty.	Part No.
1	CYLINDER HEAD	1	S15D01
2	CRANK CASE	1	S1503
3~4	FRONT HOUSING(with 1B.B.)	1set	S15B07
3	FRONT HOUSING	1	S15B07A
4	BALL BEARING A	1	11CX03B
5~6	COUNTER LINER/PISTON ASSY	1set	S15D02
5	COUNTER LINER	1	S15D02A
6	COUNTER PISTON	1	S15D02B
7~8	CYL. LINER/PISTON ASSY	1set	S15D04
7	CYLINDER LINER	1	S15D04A
8	PISTON	1	S15D04B
9	CRANK SHAFT	1	S15B08
10	CONNECTING ROD	1	S1505
11	PISTON PIN	1	S1506
12	PISTON PIN STOP RING (2pcs)	1	19X61
13	DRIVE WASHER	1	S1510
14	PROPELLER WASHER	1	15212
15	PROPELLER NUT	1	15214

No.	Name of part	Qty.	Part No.
16	THRUST WASHER	1	15440
17	SETTING SCREW SET	1set	S2515
	C3*10, 4PCS / C3*8, 4PCS		
18	FRONT HOUSING GASKET	1	15416
19	COMPRESSION ADJ. SCREW	1	11CXD17
20	ROCK NUT	1	11CXD18
【FOR R/C】			
20	THROTTLE VALVE ASSY	1set	11CX70
21	VENTURI INSERT	1	11CX70V
【FOR C/L】			
22	VENTURI	1	S1521
23	NEEDLE VALVE ASSY	1	15220
24	VENTURI GASKET	1	15323
【NORMAL MAFFLER】			
25	MUFFLER(with choke nipple)	1set	MC154
【OPTION MUFFLER】			
26	MUFFLER	1set	M154

ENYA METAL PRODUCTS CO., LTD. **enya**

16-3 TIKUMASAWA-HIGASHI MIYOSHI-CHO IRUMA-GUN SAITAMA 354-0046, JAPAN

TEL049(259)5783 FAX049(259)3075